

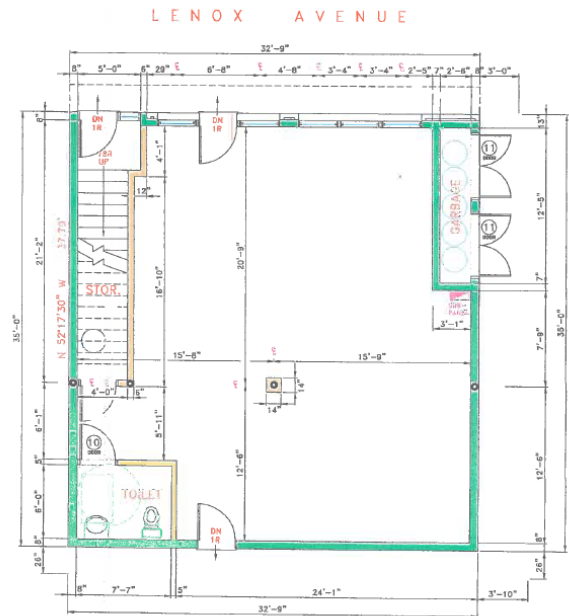
FOR LEASE

\$3,000 MONTH

NRT



212 Lenox Ave., Westfield, NJ 07090
LENOX AVE



PROPERTY INFORMATION

AVAILABLE: 1,150 SF

PROPERTY DESCRIPTION:

This is 1,150 SF of affordable retail space. The space is one large open area with a storage closet and an ADA bathroom. Here is an opportunity to join other retailers in one of the best downtowns in all of New Jersey

Area Description:

The space is across from the Post Office and next to the UPS store in the heart of downtown Westfield. It is close to mass transit, municipal parking lots, restaurants and shops..



David Labush
Cell: 732-687-4242
Email: davelabush@gmail.com

Saul Drittel
Cell: 908-591-8966
Email: saul.drittel@cbmoves.com

CBCWORLDWIDE.COM

©2017 Coldwell Banker Real Estate LLC, dba Coldwell Banker Commercial Affiliates. All Rights Reserved. Coldwell Banker Real Estate LLC, dba Coldwell Banker Commercial Affiliates fully supports the principles of the Equal Opportunity Act. Each Office is Independently Owned and Operated. Coldwell Banker Commercial and the Coldwell Banker Commercial Logo are registered service marks owned by Coldwell Banker Real Estate LLC, dba Coldwell Banker Commercial Affiliates.

Coldwell Banker Commercial
NRT
600 North Avenue, Westfield, NJ 07090
888-829-0221