

FOR LEASE

Prime Retail Space Westfield, New Jersey

Also zoned for Financial Services
Across from Banana Republic and Williams Sonoma



ADDRESS:

138-142 Central Avenue, Westfield NJ 07090

BUILDING DESCRIPTION:

One-story retail building.

LOCATION:

The property is located in the heart of the Downtown Shopping District of Westfield across from **Banana Republic and Williams Sonoma**

SQUARE FOOTAGE:

8,366 square feet

STREET FRONTAGE:

50 feet

WESTFIELD RETAIL MARKET:

Lord & Taylor ,Gap, Gap Kids, Baby Gap, Athleta, Ann Taylor, Blue Mercury, Jos. A. Bank, Banana Republic, Starbucks, Victoria Secret, Francesca's Collections, Lucky Brand Jeans, Alex and Ani, Trader Joe's

AVAILABILITY:

Immediate

PARKING:

On site parking and adjacent municipal parking lot

ASKING RENT:

Upon request

MARKET DEMOGRAPHICS

Westfield	Population	Daytime Population	Household	Ave HH Income
1 mile	17,096	11,080	6,059	\$191,382
3 miles	105,405	51,039	39,000	\$160,102
5 miles	346,710	172,571	125,357	\$129,508

Relocation Realty
Exclusive Broker
Anthony Schilling

66 Elm Street
Westfield, NJ 07090

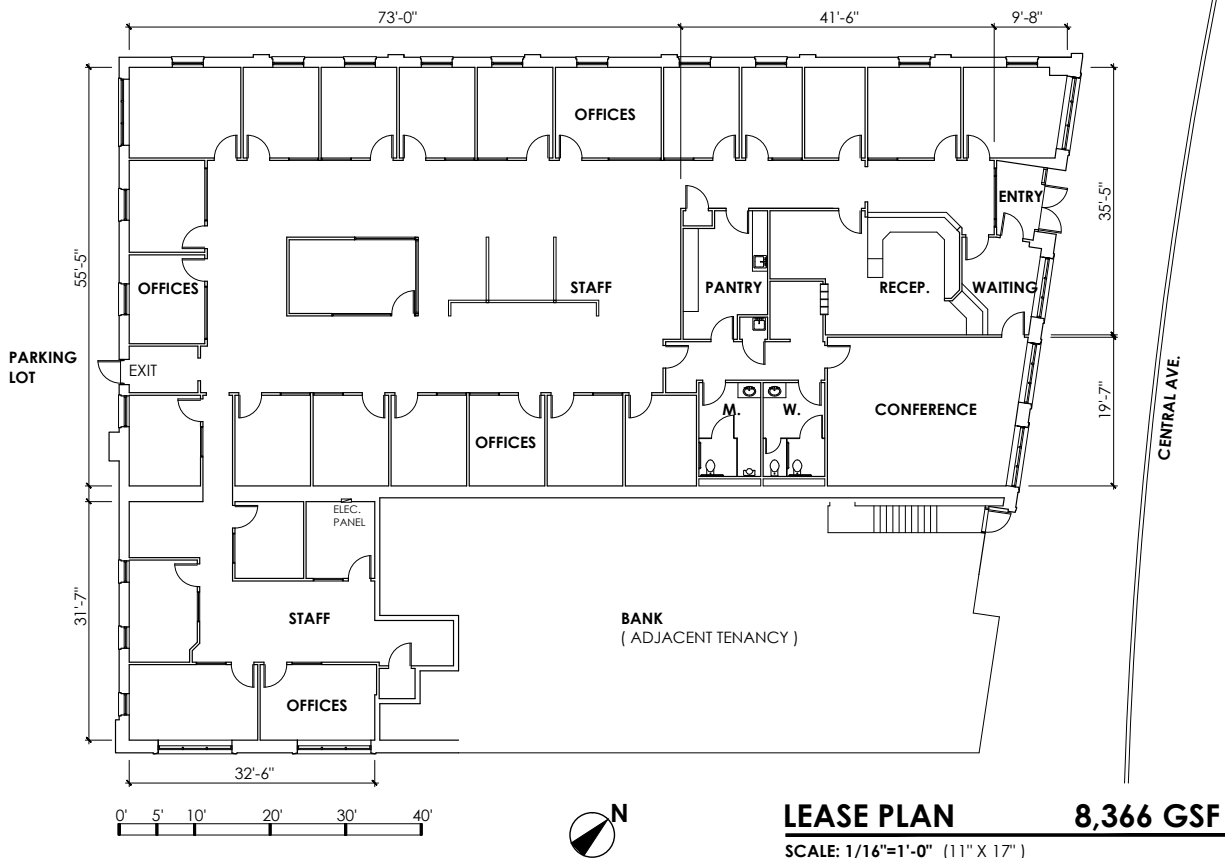
908-451-0700/cell
908-233-6677/office
tonyrelo@aol.com

View of 138-142 Central Avenue, Westfield, NJ



View of Central Avenue Parking Lot on left side





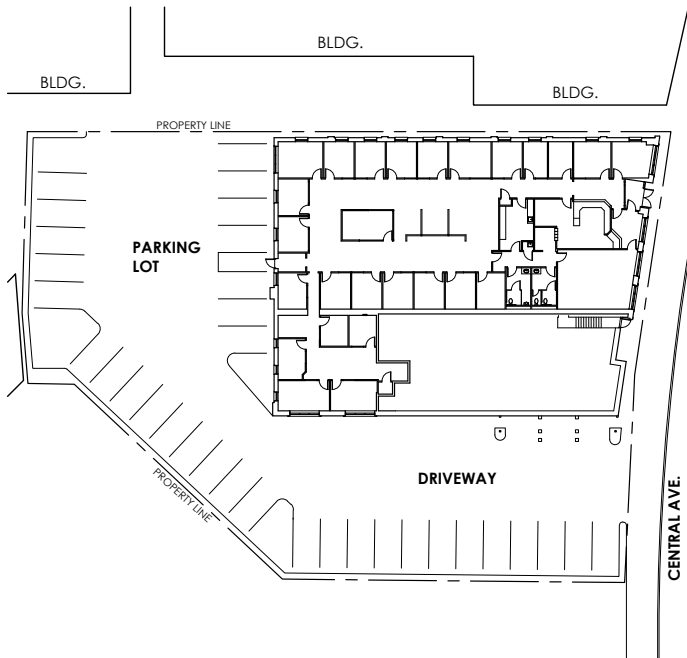
LEASE PLAN **8,366 GSF**
 SCALE: 1/16"=1'-0" (11" X 17")

□ □
 BUSING ASSOCIATES / ARCHITECTS / LLP
 235 MAMARONECK AVENUE WHITE PLAINS NY 10605

WIN PROPERTIES, INC. / RYE RIDGE PLAZA
 10 RYE RIDGE PLAZA, SUITE 200
 RYE BROOK, NY 10573

140 CENTRAL AVE.
WESTFIELD, N.J.

3 / 25 / 16
LP-1



SITE PLAN
 SCALE: 1"=40'-0" (11" X 17")



LOCATION PLAN

□ □
 BUSING ASSOCIATES / ARCHITECTS / LLP
 235 MAMARONECK AVENUE WHITE PLAINS NY 10605

WIN PROPERTIES, INC. / RYE RIDGE PLAZA
 10 RYE RIDGE PLAZA, SUITE 200
 RYE BROOK, NY 10573

140 CENTRAL AVE.
WESTFIELD, N.J.

3 / 25 / 16
SP-1