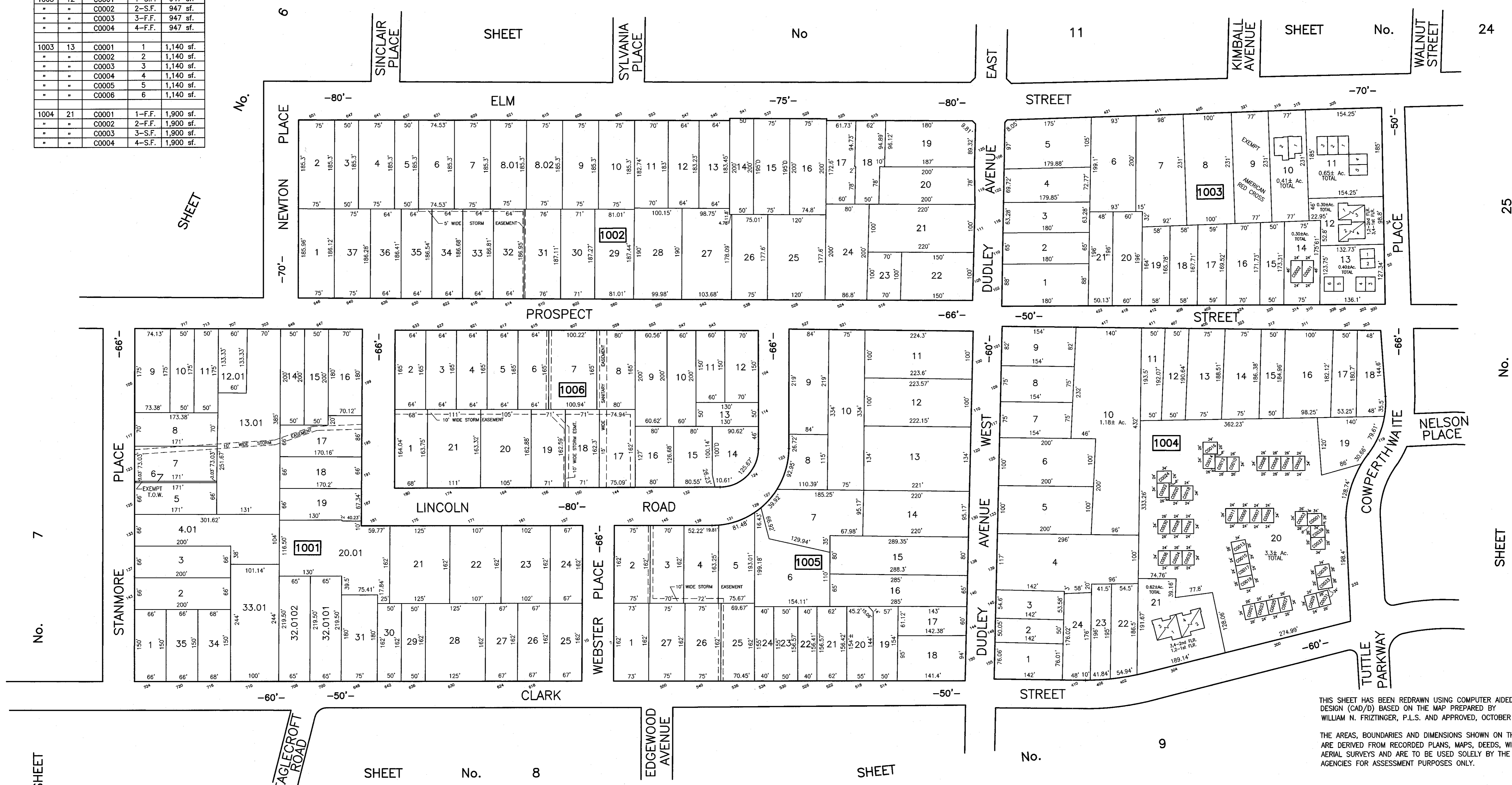


CONDOMINIUM TABLE

BLOCK	LOT	QUALIFIER	UNIT#	AREA
1003	10	C0001	1	2,200 sf.
"	"	C0002	2	2,183 sf.
1003	11	C0001	1	1,872 sf.
"	"	C0002	2	1,872 sf.
"	"	C0003	3	2,103 sf.
"	"	C0004	4	2,072 sf.
"	"	C0005	5	2,072 sf.
1003	12	C0001	1-S.F.	947 sf.
"	"	C0002	2-S.F.	947 sf.
"	"	C0003	3-F.F.	947 sf.
"	"	C0004	4-F.F.	947 sf.
1003	13	C0001	1	1,140 sf.
"	"	C0002	2	1,140 sf.
"	"	C0003	3	1,140 sf.
"	"	C0004	4	1,140 sf.
"	"	C0005	5	1,140 sf.
"	"	C0006	6	1,140 sf.
1004	21	C0001	1-F.F.	1,900 sf.
"	"	C0002	2-F.F.	1,900 sf.
"	"	C0003	3-S.F.	1,900 sf.
"	"	C0004	4-S.F.	1,900 sf.



TAX MAP REVISIONS: YEAR, BLOCK, LOT
 2014 : BLK. 1001, LOTS 4.01, 33.01
 2014 : BLK. 1003, LOT 10 (Condos)
 2014 : BLK. 1004, LOT 21 (Condos)
 2012 : BLK. 1003, LOT 14 (Condos)
 2007 : BLK. 1001, LOTS 12.01, 13.01
 2006 : BLK. 1001, LOTS 32.0101, 32.0102
 2005 : BLK. 1001, LOTS 20.01, 32.01
 2004 : BLK. 1002, LOTS 8.01 & 8.02
 1992 : BLK. 1003, LOTS 12 & 13

THIS SHEET HAS BEEN REDRAWN USING COMPUTER AIDED DRAFTING/ DESIGN (CAD/D) BASED ON THE MAP PREPARED BY WILLIAM N. FRITZINGER, P.L.S. AND APPROVED, OCTOBER 7, 1991.
 THE AREAS, BOUNDARIES AND DIMENSIONS SHOWN ON THIS SHEET ARE DERIVED FROM RECORDED PLANS, MAPS, DEEDS, WILLS AND AERIAL SURVEYS AND ARE TO BE USED SOLELY BY THE APPROPRIATE AGENCIES FOR ASSESSMENT PURPOSES ONLY.

TAX MAP
TOWN OF WESTFIELD
UNION COUNTY
NEW JERSEY
 SCALE: 1" = 100' SEPTEMBER 10, 2012
PAULO D. HORTA, PLS
TOWN SURVEYOR
 PUBLIC WORKS CENTER, 959 NORTH AVE., WEST WESTFIELD, NEW JERSEY, 07090

THIS SHEET WAS FORMALLY CERTIFIED ON 9/15/12, ASSIGNED SERIAL # 1003, SIGNED BY JUDY MILLER, CTA AND SUE DAVISON, CTA.