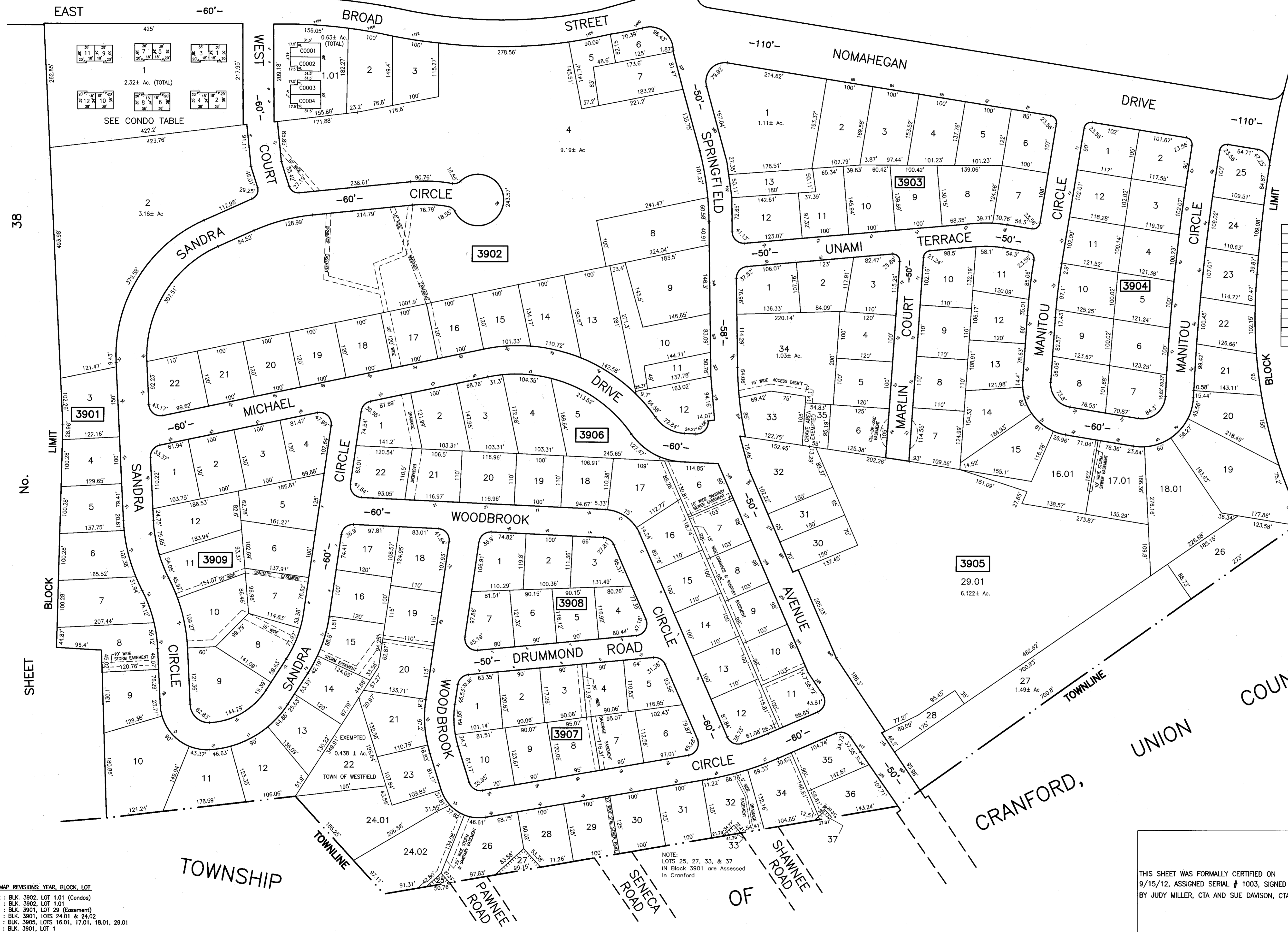
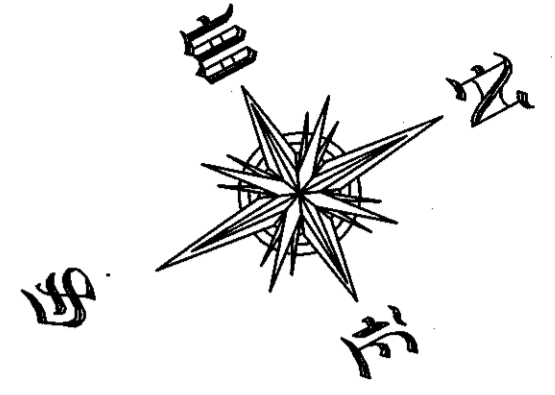


SHEET No. 20

SHEET

No. 19



**CONDOMINIUM TABLE**

BLOCK	LOT	QUALIFIER	UNIT#	AREA
3901	1	C0001	1	1,372 sf.
"	"	C0002	2	1,372 sf.
"	"	C0003	3	1,372 sf.
"	"	C0004	4	1,372 sf.
"	"	C0005	5	1,372 sf.
"	"	C0006	6	1,372 sf.
"	"	C0007	7	1,372 sf.
"	"	C0008	8	1,372 sf.
"	"	C0009	9	1,372 sf.
"	"	C0010	10	1,372 sf.
"	"	C0011	11	1,372 sf.
"	"	C0012	12	1,372 sf.

18

No.

SHEET

THIS SHEET HAS BEEN REDRAWN USING COMPUTER AIDED DRAFTING/ DESIGN (CAD/D) BASED ON THE MAP PREPARED BY WILLIAM N. FRIZTINGER, P.L.S. AND APPROVED, OCTOBER 7, 1991.

THE AREAS, BOUNDARIES AND DIMENSIONS SHOWN ON THIS SHEET ARE DERIVED FROM RECORDED PLANS, MAPS, DEEDS, WILLS AND AERIAL SURVEYS AND ARE TO BE USED SOLELY BY THE APPROPRIATE AGENCIES FOR ASSESSMENT PURPOSES ONLY.

**TAX MAP**  
**TOWN OF WESTFIELD**  
**UNION COUNTY**  
**NEW JERSEY**  
 SCALE: 1" = 100' SEPTEMBER 10, 2012  
**PAULO D. HORTA, PLS**  
**TOWN SURVEYOR**  
 PUBLIC WORKS CENTER, 959 NORTH AVE., WEST WESTFIELD, NEW JERSEY, 07090

TAX MAP REVISIONS: YEAR, BLOCK, LOT  
 2012 : BLK. 3902, LOT 1.01 (Condo)  
 2011 : BLK. 3902, LOT 1.01  
 2004 : BLK. 3901, LOT 29 (Easement)  
 2003 : BLK. 3901, LOTS 24.01 & 24.02  
 1996 : BLK. 3905, LOTS 16.01, 17.01, 18.01, 29.01  
 1992 : BLK. 3901, LOT 1

NOTE:  
 LOTS 25, 27, 33, & 37  
 IN Block 3901 are Assessed  
 in Cranford

THIS SHEET WAS FORMALLY CERTIFIED ON  
 9/15/12, ASSIGNED SERIAL # 1003, SIGNED  
 BY JUDY MILLER, CTA AND SUE DAVISON, CTA